

ADDENDUM NO. 2

PROJECT: **Hamilton Heights School Pavement Improvements**
Hamilton Heights School Corporation
Arcadia, Indiana

DATE: April 5, 2021

FROM: W.R. Dunkin & Son Inc.
2409 W 18th. St
Anderson, IN 46016

TO: BIDDERS OF RECORD

This addendum changes and modifies the Bidding Documents dated March 17, 2021, and will become a part of the Contract Documents. Acknowledge receipt of this in the space provided on the Bid Form. Failure to do so may subject Bidder to disqualification.

This addendum consists of the following pages:

Addendum 2: 1 (8 1/2x11) pages
Engineering Addendum 2: 8 (24x36) pages

A. GENERAL NOTES:

1. Note, this Addendum addresses all questions received up to 3:00 PM on April 2, 2021. Any questions received after this time will not be addressed. This is the final addendum prior to the bid opening on April 7, 2021.

B. QUESTIONS AND ANSWERS:

1. **Q: Is a field office required for this project?** *A: A field office will not be required for this project.*

C. DOCUMENT MODIFICATIONS

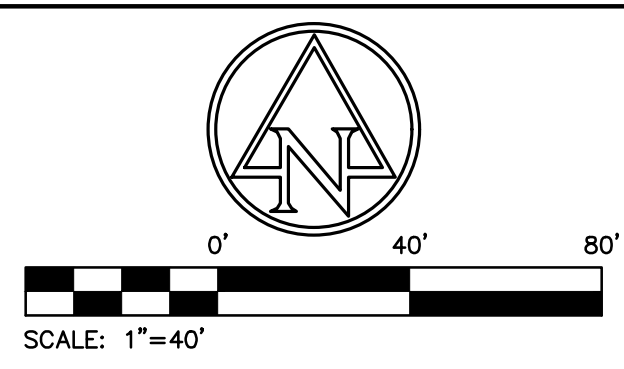
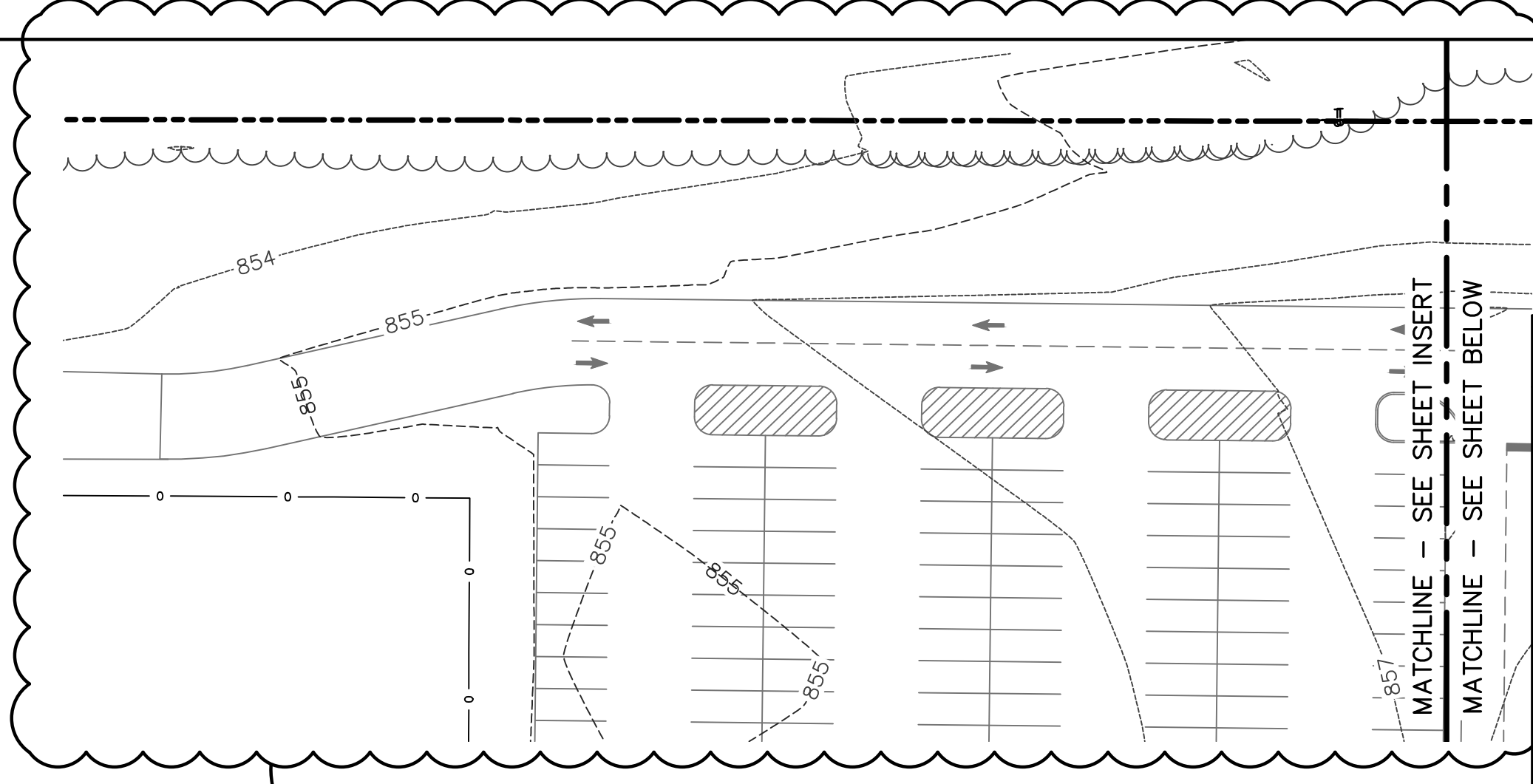
Drawings

See clouded revisions marked with a 'Triangle 1' on the following drawings:

C101 Existing Topography Plan
C116 Demolition Plan
C201 Site Plan
C206 Site Plan
C301 Grading and Utility Plan
C501 Erosion Control Plan
C506 Erosion Control Plan

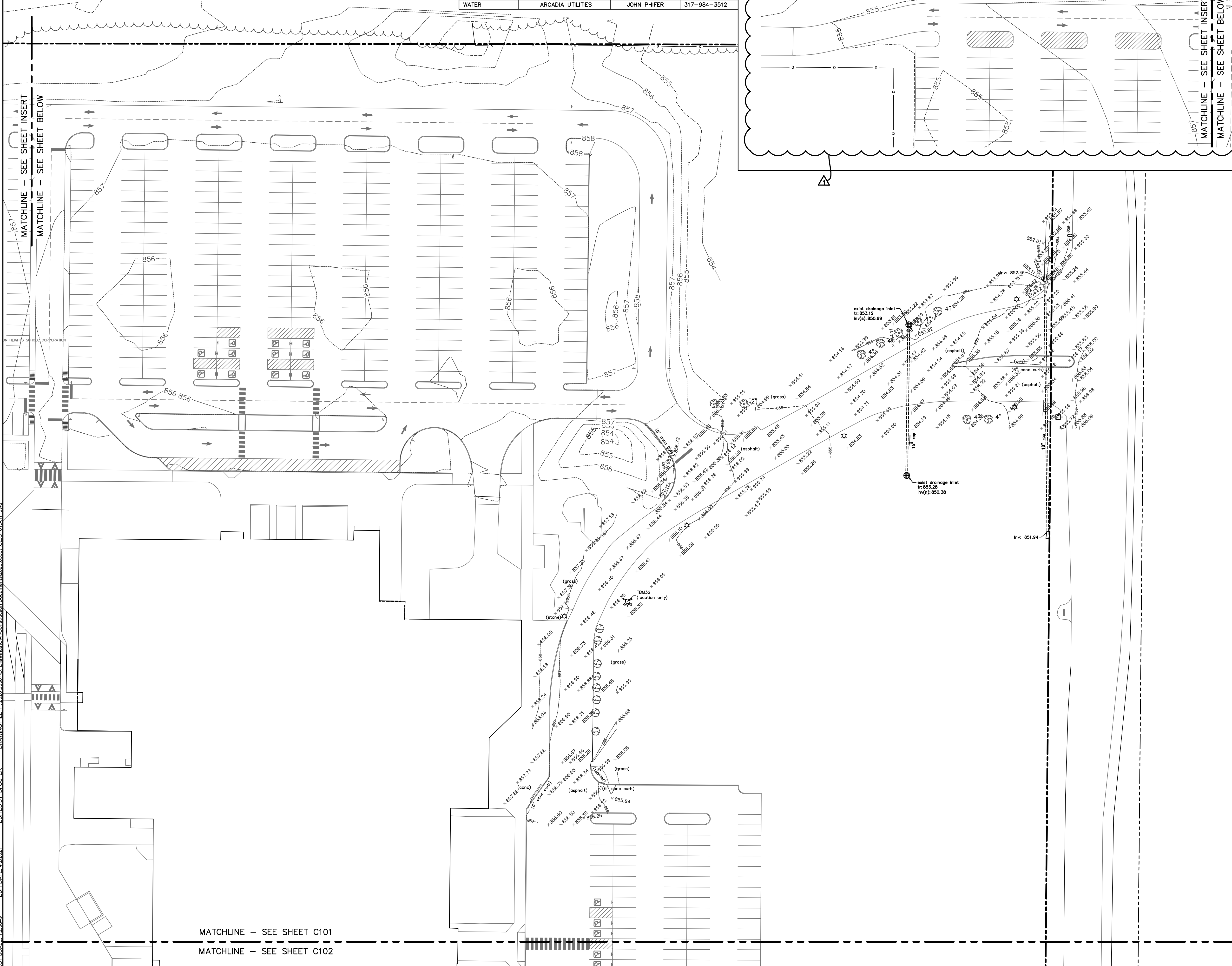
END

UTILITY CONTACTS			
UTILITY	COMPANY	CONTACT	PHONE NO.
CABLE TELEVISION	COMCAST	-	317-776-0660
ELECTRIC	DUKE ENERGY	-	800-521-2232
GAS	VECTREN	BRIAN HARGER	317-592-4500
SANITARY SEWER	ARCADIA UTILITIES	JOHN PHIFER	317-984-3512
STORM SEWER	HAMILTON CO. SURVEYOR	ANDY CONOVER	317-776-8495
TELEPHONE	FRONTIER	STEVE COSTFLOW	317-984-9010
WATER	ARCADIA UTILITIES	JOHN PHIFER	317-984-3512



EXISTING LEGEND	
	Beehive Inlet
	Bush
	Clean Out
	Combination Pole
	Curb Inlet
	Delineator Post
	Drainage Inlet
	Drainage MH
	Electric Box
	Electric Handhole
	Electric Meter Box
	Fire Hydrant
	Fire Plug
	Fire Valve Shut Off
	Flag Pole
	Ground Light
	Guard Post
	Hose Bib
	Lid
	Light Pole
	Manhole
	Pine Tree
	Post
	Power Pole
	Sanitary MH
	Sign
	Spigot
	Stand Pipe
	Telephone Handhole
	Telephone Pedestal
	Test Hole
	Transformer
	Tree
	Water Valve

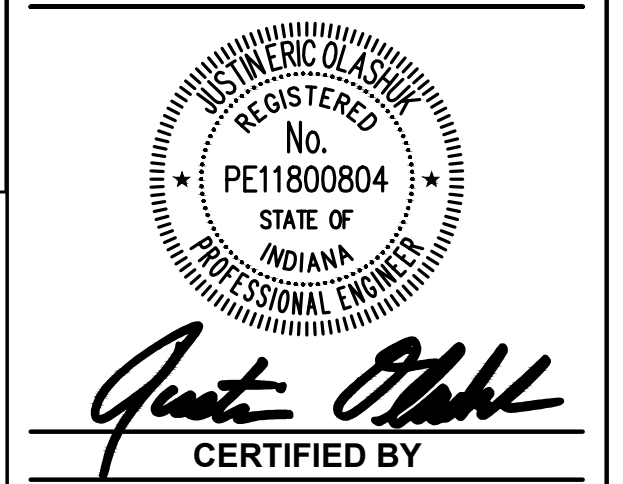
BENCHMARK DATA	
OPUS SOLUTION #29933630	ASI BASE #300 REBAR SET ELEV=858.29
ASI TBM #31	CHISELED SQUARE ON EAST SIDE OF CONCRETE LIGHT POLE BASE AT SE CORNER OF MIDDLE SCHOOL PARKING LOT. ELEV = 855.26
ASI TBM #33	CHISELED "X" ON NORTH BOLT OF FIRE HYDRANT AT NW CORNER OF HIGH SCHOOL. ELEV = 859.73
ASI TBM #35	CHISELED "X" ON NORTH BOLT OF FIRE HYDRANT AT NORTHWEST CORNER OF FOOTBALL FIELD BLEACHERS. ELEV = 857.96



HAMILTON HEIGHTS SCHOOL

PAVEMENT IMPROVEMENTS

25802 STATE ROAD 19, ARCADIA, INDIANA



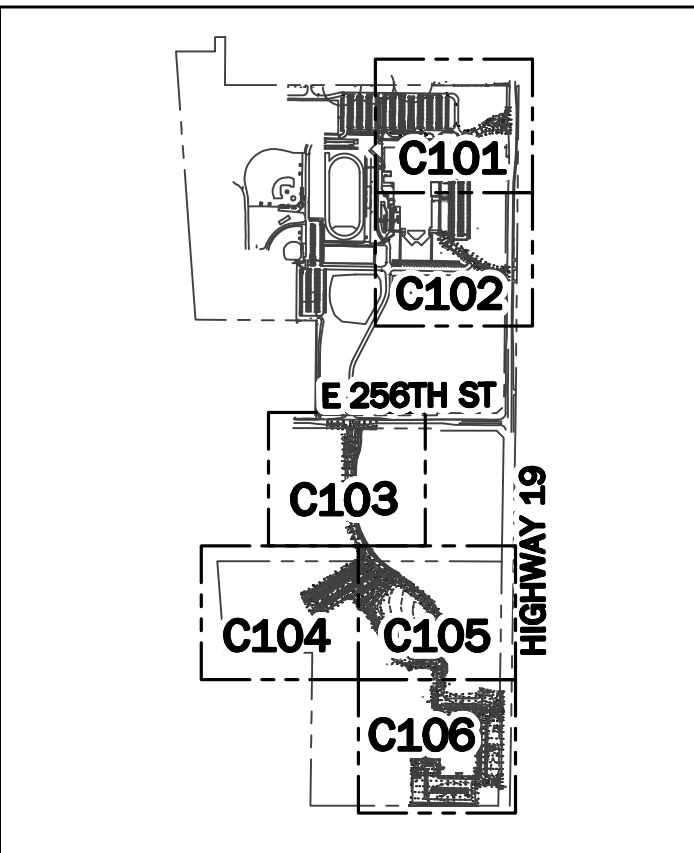
ISSUANCE INDEX	
DATE:	3/17/2021
PROJECT PHASE:	CONSTRUCTION DOCUMENTS

REVISION SCHEDULE		
NO.	DESCRIPTION	DATE
1	ADDENDUM 2	04/05/2021

Project Number 2020.03307

EXISTING TOPOGRAPHY PLAN

C101



- KEY MAP**
SCALE: NOT TO SCALE
- GENERAL NOTES:**
- CONTRACTOR SHALL PROTECT AND NOT DESTROY THE PROPERTY CORNER MONUMENTS DURING CONSTRUCTION.
 - CONTRACTOR TO VERIFY LOCATION, SIZE AND DEPTH OF EXISTING UTILITIES PRIOR TO COMMENCING ANY CONSTRUCTION. CONTACT ENGINEER IF VARIATION EXISTS.
 - SEE SHEET C002 GENERAL NOTES FOR MORE INFORMATION.

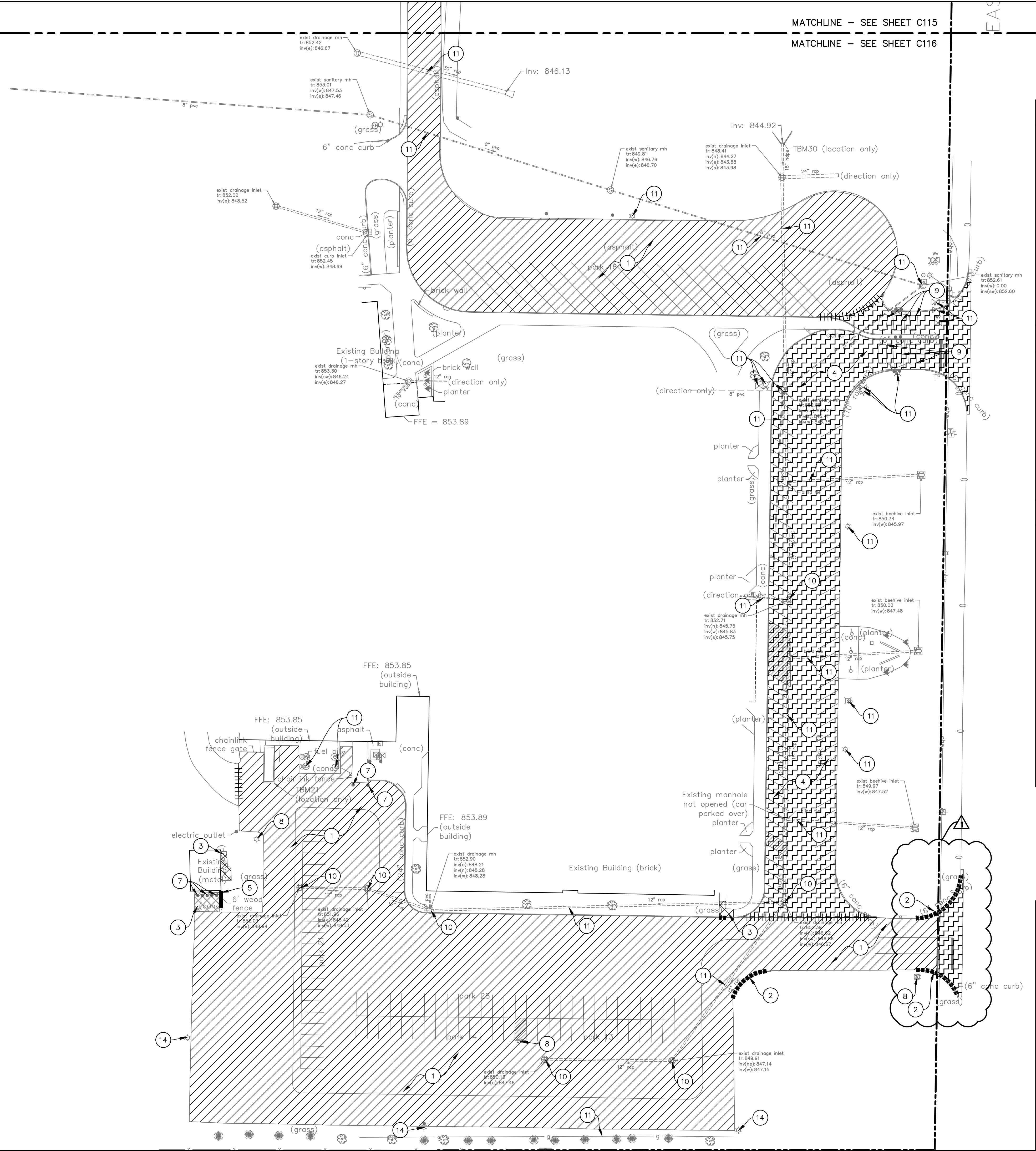
!! CAUTION !!

THE LOCATIONS OF ALL EXISTING UNDERGROUND UTILITIES SHOWN ON THIS PLAN ARE BASED UPON ABOVE GROUND EVIDENCE (including, but not limited to, manholes, inlets, valves, and marks made upon the ground by others) AND ARE SPECULATIVE IN NATURE. THERE MAY ALSO BE OTHER EXISTING UNDERGROUND UTILITIES FOR WHICH THERE IS NO ABOVE GROUND EVIDENCE OR FOR WHICH NO ABOVE GROUND EVIDENCE WAS OBSERVED. THE EXACT LOCATIONS OF SAID EXISTING UNDERGROUND UTILITIES SHALL BE VERIFIED BY THE CONTRACTOR PRIOR TO ANY AND ALL CONSTRUCTION.

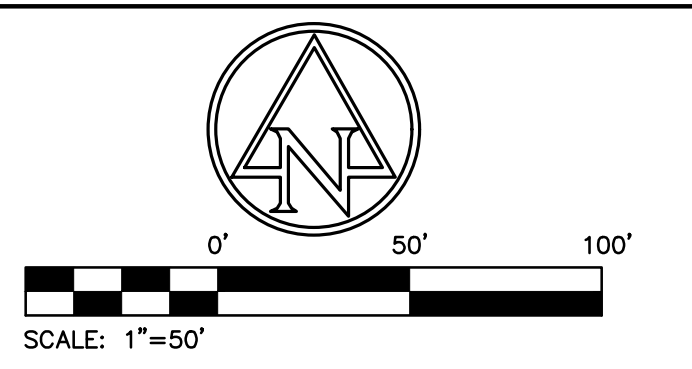
CALL TOLL FREE
"811" OR 1-800-382-5544
INDIANA UNDERGROUND

PLOT DATE: 4/5/2021 7:02 AM
PLOT SCALE: 1:2,500
DRAWING FILE: P:\2020\03307\0_Drawing\Civil\Construction Documents\2020.03307_CE_C101_XTP.dwg
EDIT DATE: 4/2/2021
EDITED BY: DFCOSTER

MATCHLINE - SEE SHEET C101
MATCHLINE - SEE SHEET C102



MATCHLINE - SEE SHEET C115
 MATCHLINE - SEE SHEET C116



EXISTING LEGEND

	Beehive Inlet		Lid
	Bush		Light Pole
	Clean Out		Manhole
	Combination Pole		Pine Tree
	Curb Inlet		Post
	Delineator Post		Power Pole
	Drainage Inlet		Sanitary MH
	Drainage MH		Sign
	Electric Box		Spigot
	Electric Handhole		Stand Pipe
	Electric Meter Box		Telephone Handhole
	Fire Hydrant		Telephone Pedestal
	Fire Plug		Test Hole
	Fire Valve Shut Off		Transformer
	Flag Pole		Tree
	Ground Light		Water Valve
	Guard Post		
	Hose Bib		

DEMOLITION LEGEND

	EXISTING UTILITY TO BE REMOVED
	PAVEMENT TO BE SAWCUT
	EXISTING CURB TO BE REMOVED
	EXISTING FENCE TO BE REMOVED
	EXISTING ASPHALT TO BE MILLED AND RESURFACED
	EXISTING ASPHALT TO BE REMOVED
	EXISTING CONCRETE AND BASE TO BE REMOVED
	EXISTING STONE TO BE REMOVED

- KEYNOTES**
- EXISTING ASPHALT PAVEMENT AND BASE MATERIAL TO BE REMOVED (SAWCUT FOR CLEAN EDGE).
 - EXISTING CONCRETE CURB TO BE REMOVED.
 - REMOVE EXISTING CONCRETE, BASE, CONCRETE PADS AND OTHER MISCELLANEOUS CONCRETE MATERIAL (SAWCUT FOR CLEAN EDGE).
 - EXISTING ASPHALT PAVEMENT TO BE MILLED AND SURFACED.
 - EXISTING FENCE TO BE REMOVED.
 - EXISTING LANDSCAPE STONE TO BE REMOVED.
 - EXISTING PIPE BOLLARD TO BE REMOVED.
 - EXISTING LIGHT POLE TO BE REMOVED.
 - EXISTING PAVEMENT INDUCTION LOOPS TO BE REMOVED AND REINSTALLED AFTER PAVEMENT PLACEMENT.
 - PROTECT EXISTING INLET / MANHOLE. EXISTING CASTING TO BE REPLACED WITH APPROPRIATE FLAT CASTING. CONTRACTOR TO VERIFY EXISTING INLET / MANHOLE TYPE AND PROVIDE SUBSTITUTE CASTING REPLACEMENT.
 - PROTECT EXISTING UTILITY THROUGHOUT DURATION OF CONSTRUCTION.
 - EXISTING LIGHT POLE TO BE REMOVED AND RELOCATED. (ALTERNATE #1)
 - EXISTING SIGNAGE TO BE REMOVED.
 - EXISTING DUKE LIGHT POLE AND BASE TO BE REMOVED. COORDINATE REMOVAL WITH DUKE ENERGY.
 - EXISTING CONCRETE ENTRY STOOP TO BE REMOVED AND REPLACED. COORDINATE WITH OWNER.

- GENERAL NOTES:**
- CONTRACTOR SHALL PROTECT AND NOT DESTROY THE PROPERTY CORNER MONUMENTS DURING CONSTRUCTION.
 - CONTRACTOR TO VERIFY LOCATION, SIZE AND DEPTH OF EXISTING UTILITIES PRIOR TO COMMENCING ANY CONSTRUCTION. CONTACT ENGINEER IF VARIATION EXISTS.
 - SEE SHEET C002 GENERAL NOTES FOR MORE INFORMATION.

!! CAUTION !!
 THE LOCATIONS OF ALL EXISTING UNDERGROUND UTILITIES SHOWN ON THIS PLAN ARE BASED UPON ABOVE GROUND EVIDENCE (including, but not limited to, manholes, inlets, valves, and marks made upon the ground by others) AND ARE SPECULATIVE IN NATURE. THERE MAY ALSO BE OTHER EXISTING UNDERGROUND UTILITIES FOR WHICH THERE IS NO ABOVE GROUND EVIDENCE OR FOR WHICH NO ABOVE GROUND EVIDENCE WAS OBSERVED. THE EXACT LOCATIONS OF SAID EXISTING UNDERGROUND UTILITIES SHALL BE VERIFIED BY THE CONTRACTOR PRIOR TO ANY AND ALL CONSTRUCTION.

CALL TOLL FREE
 811 OR 1-800-382-5544
 - INDIANA UNDERGROUND -

UTILITY CONTACTS

UTILITY	COMPANY	CONTACT	PHONE NO.
CABLE TELEVISION	COMCAST	-	317-776-0660
ELECTRIC	DUKE ENERGY	-	800-521-2232
GAS	VECTREN	BRIAN HARGER	317-592-4500
SANITARY SEWER	ARCADIA UTILITIES	JOHN PHIFER	317-984-3512
STORM SEWER	HAMILTON CO. SURVEYOR	ANDY CONOVER	317-776-8495
TELEPHONE	FRONTIER	STEVE COSTFLOW	317-984-9010
WATER	ARCADIA UTILITIES	JOHN PHIFER	317-984-3512



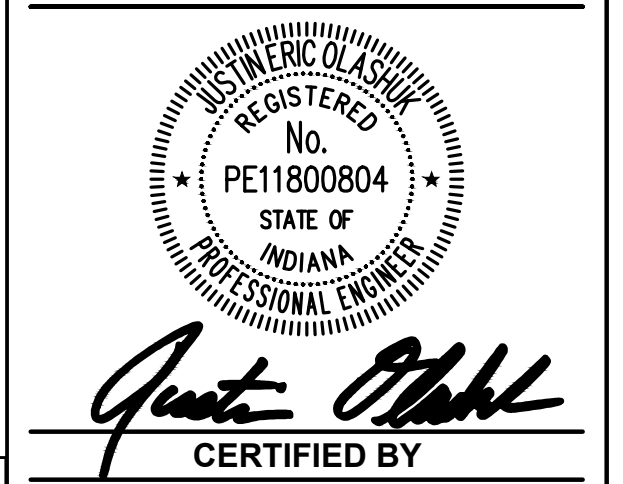
HAMILTON HEIGHTS SCHOOL DISTRICT
 25802 Indiana 19
 Arcadia, Indiana 46030



HAMILTON HEIGHTS SCHOOL

PAVEMENT IMPROVEMENTS

25802 STATE ROAD 19, ARCADIA, INDIANA



ISSUANCE INDEX

DATE:	3/17/2021
PROJECT PHASE:	CONSTRUCTION DOCUMENTS

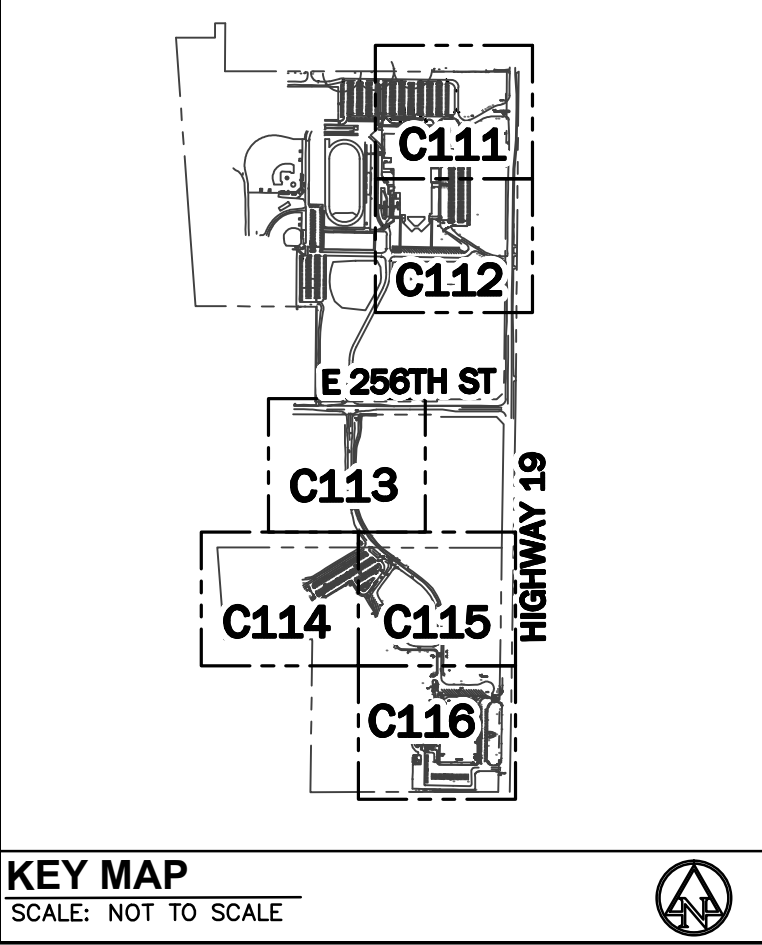
REVISION SCHEDULE

NO.	DESCRIPTION	DATE
1	ADDENDUM 2	04/05/2021

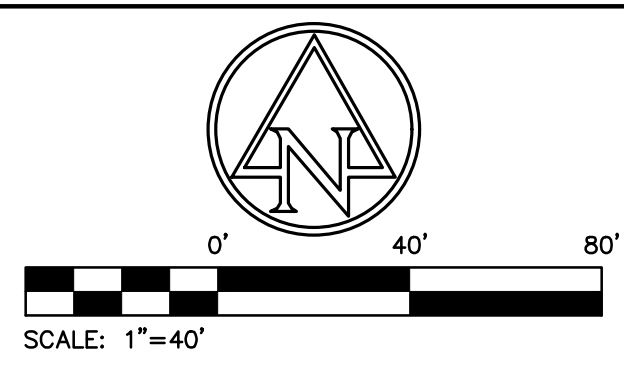
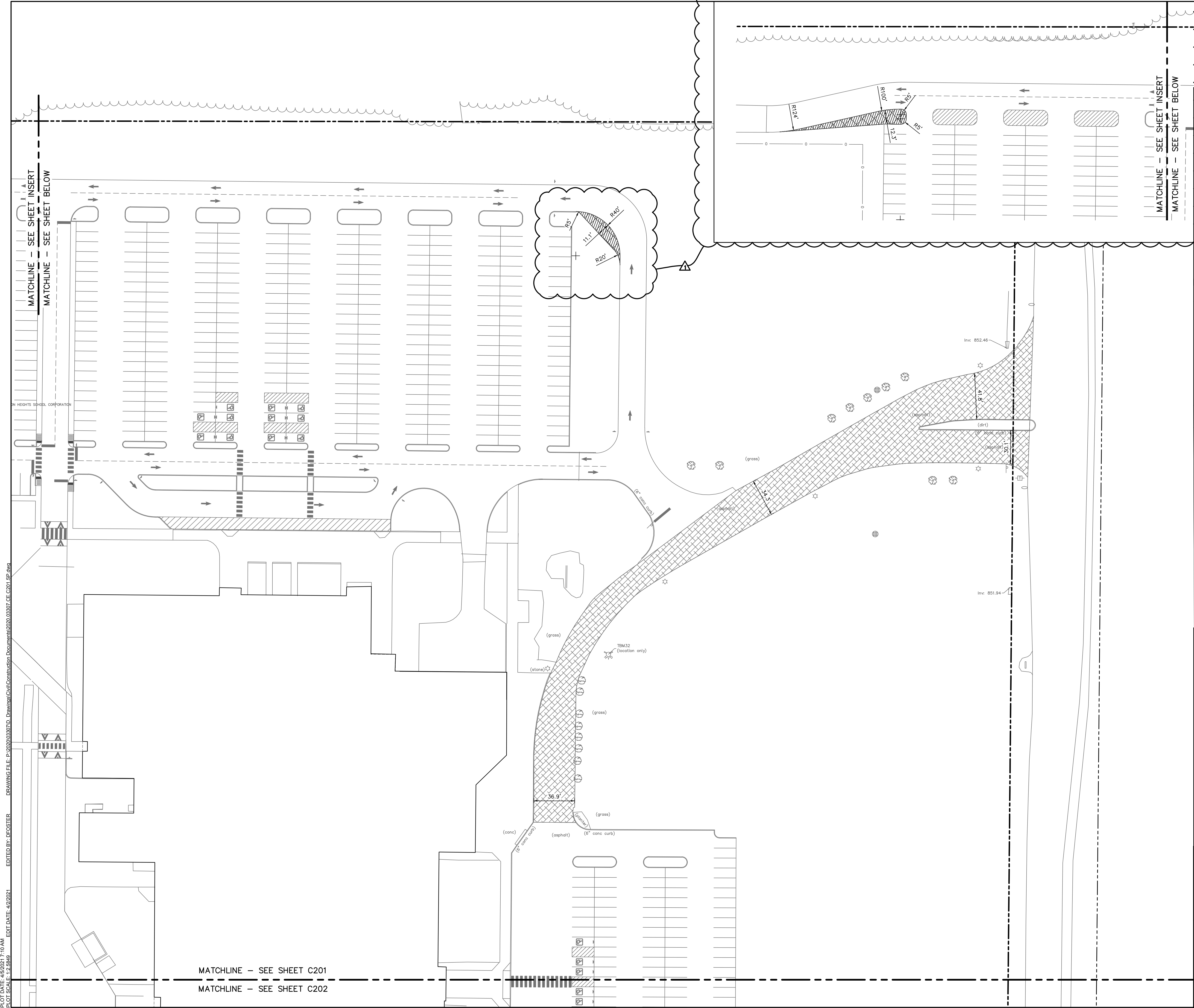
Project Number 2020.03307

DEMOLITION PLAN

C116



PLOT DATE: 4/5/2021 7:08 AM
 PLOT SCALE: 1:2,500
 EDIT DATE: 4/5/2021
 EDITED BY: DFCOSTER
 DRAWING FILE: P:\2020\03307\0 - Drawings\Civil\Construction Documents\2020.03307_CE_C116.dwg



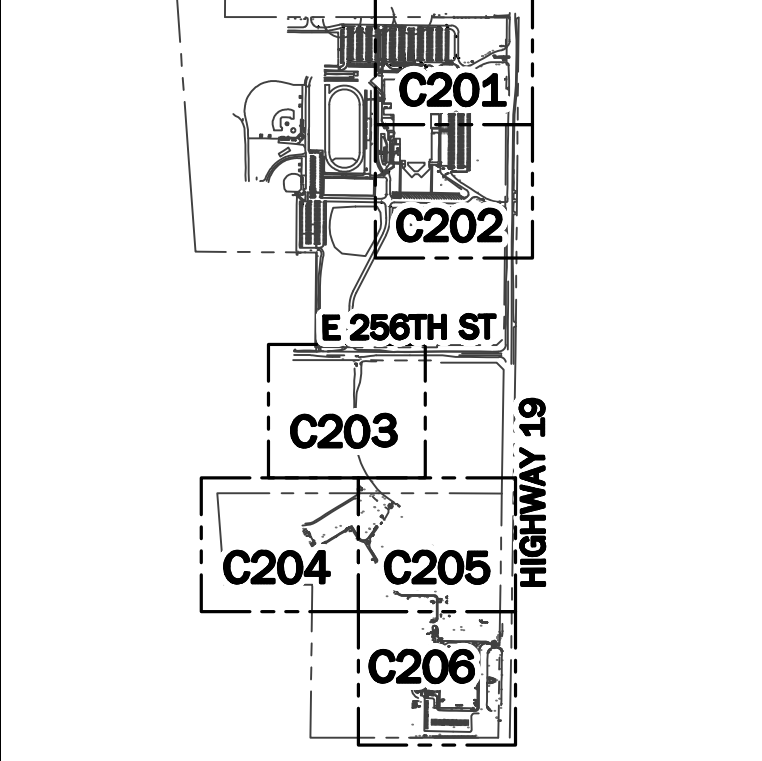
EXISTING LEGEND

	Beehive Inlet		Lid
	Bush		Light Pole
	Clean Out		Manhole
	Combination Pole		Pine Tree
	Curb Inlet		Post
	Delineator Post		Power Pole
	Drainage Inlet		Sanitary MH
	Drainage MH		Sign
	Electric Box		Spigot
	Electric Handhole		Stand Pipe
	Electric Meter Box		Telephone Handhole
	Fire Hydrant		Telephone Pedestal
	Fire Plug		Test Hole
	Fire Valve Shut Off		Transformer
	Flag Pole		Tree
	Ground Light		Water Valve
	Guard Post		
	Hose Bib		

SITE LEGEND

	LIGHT DUTY ASPHALT PAVEMENT
	HEAVY DUTY ASPHALT PAVEMENT
	RIGHT OF WAY ASPHALT PAVEMENT
	CONCRETE PAVEMENT
	MILL AND OVERLAY

- KEYNOTES**
- 6" CONCRETE CURB
 - CURB TAPER
 - ADA PARKING SPACE (4" BLUE PAINT STRIPE)
 - ADA PARKING SYMBOL
 - ADA ACCESSIBLE PARKING SIGN
 - PARKING SPACE (4" WHITE PAINT STRIPE)
 - DUMPSTER PAD
 - DUMPSTER ENCLOSURE
 - CONCRETE BOLLARD
 - 8' TALL BLACK VINYL COATED CHAINLINK FENCE
 - CURB TURNOUT
 - 24" STOP BAR, WHITE PAINT
 - DIRECTIONAL ARROW (WHITE, PAINT)
 - 4" WHITE SOLID LANE MARKING, PAINT
 - 4" WHITE DASHED LANE MARKING, PAINT
 - 4" DOUBLE YELLOW SOLID LANE MARKING, PAINT
 - CONCRETE WHEEL STOP
 - CONCRETE SIDEWALK
 - MODIFIED ADA ACCESSIBLE RAMP TYPE 'K'
 - NO PARKING STRIPING (4" WHITE)
 - CONTRACTOR TO REPLACE EXISTING STONE W/ 24" TOPSOIL ACROSS ENTIRE ISLAND AREA
 - SWING GATE
 - COMBINED CONCRETE CURB AND WALK

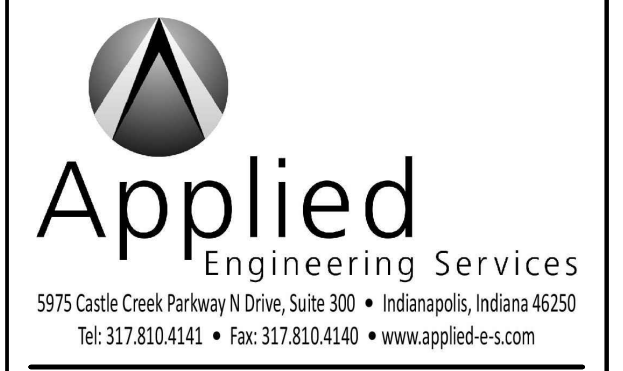


- GENERAL NOTES:**
- CONTRACTOR SHALL PROTECT AND NOT DESTROY THE PROPERTY CORNER MONUMENTS DURING CONSTRUCTION.
 - CONTRACTOR TO VERIFY LOCATION, SIZE AND DEPTH OF EXISTING UTILITIES PRIOR TO COMMENCING ANY CONSTRUCTION. CONTACT ENGINEER IF VARIATION EXISTS.
 - SEE SHEET C002 GENERAL NOTES FOR MORE INFORMATION.

!! CAUTION !!

THE LOCATIONS OF ALL EXISTING UNDERGROUND UTILITIES SHOWN ON THIS PLAN ARE BASED UPON ABOVE GROUND EVIDENCE (including, but not limited to, manholes, inlets, valves, and marks made upon the ground by others) AND ARE SPECULATIVE IN NATURE. THERE MAY ALSO BE OTHER EXISTING UNDERGROUND UTILITIES FOR WHICH THERE IS NO ABOVE GROUND EVIDENCE OR FOR WHICH NO ABOVE GROUND EVIDENCE WAS OBSERVED. THE EXACT LOCATIONS OF SAID EXISTING UNDERGROUND UTILITIES SHALL BE VERIFIED BY THE CONTRACTOR PRIOR TO ANY AND ALL CONSTRUCTION.

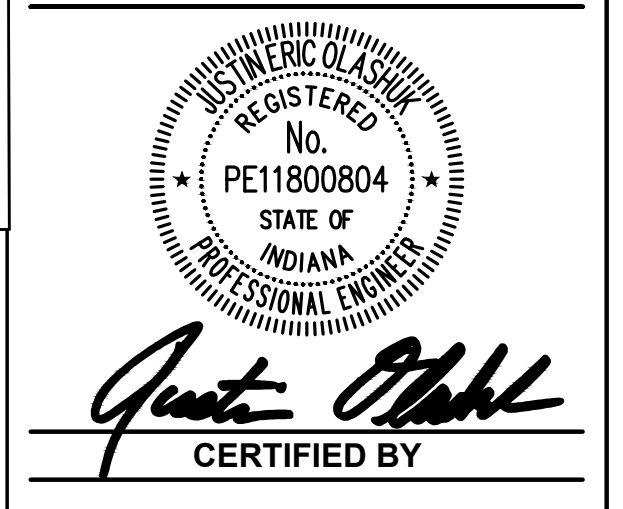
CALL TOLL FREE
811 OR 1-800-382-5544
INDIANA UNDERGROUND



HAMILTON HEIGHTS SCHOOL

PAVEMENT IMPROVEMENTS

25802 STATE ROAD 19, ARCADIA, INDIANA



ISSUANCE INDEX

DATE:	3/17/2021
PROJECT PHASE:	CONSTRUCTION DOCUMENTS

REVISION SCHEDULE

NO.	DESCRIPTION	DATE
1	ADDENDUM 2	04/05/2021

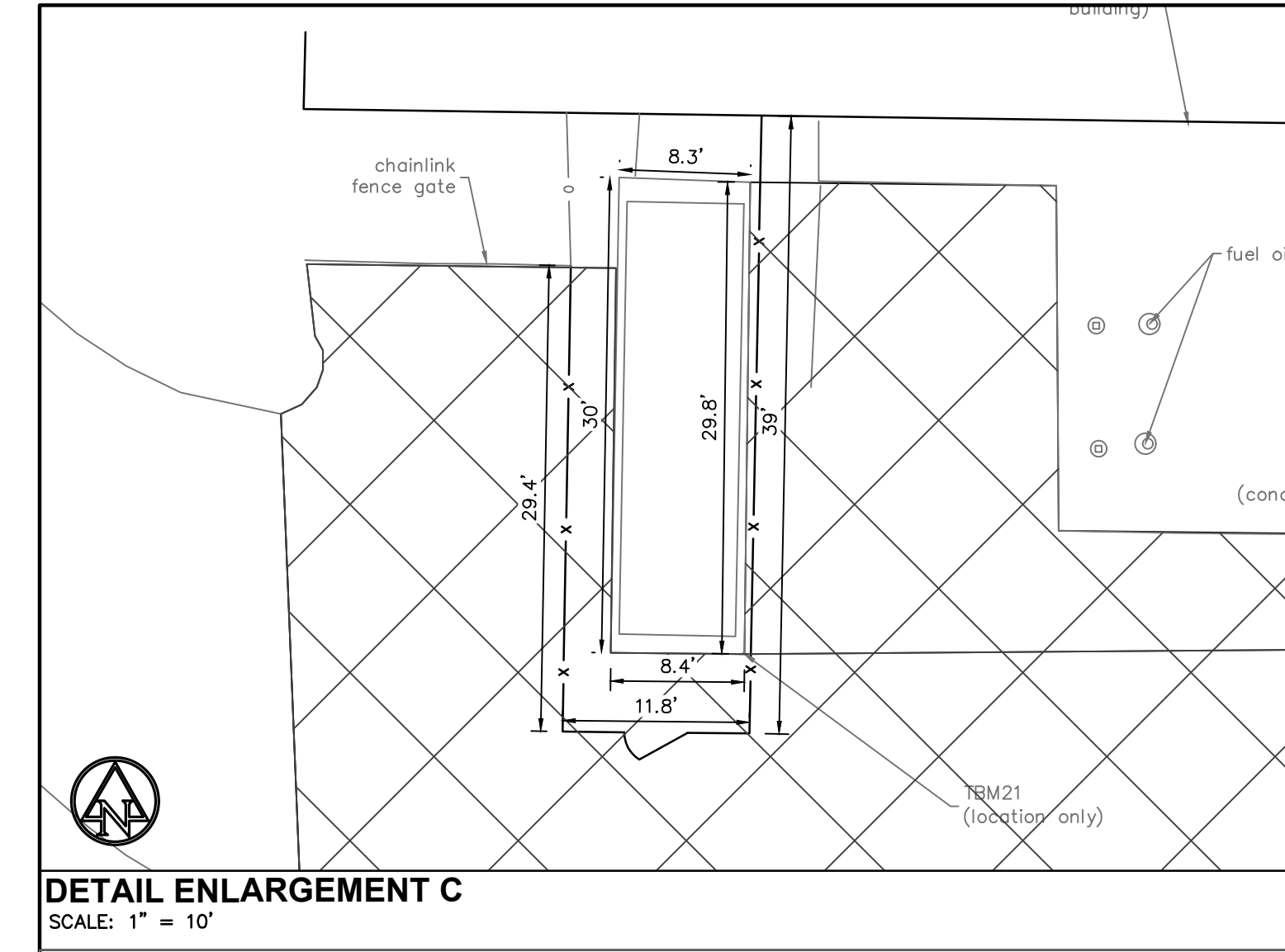
Project Number 2020.03307

SITE PLAN

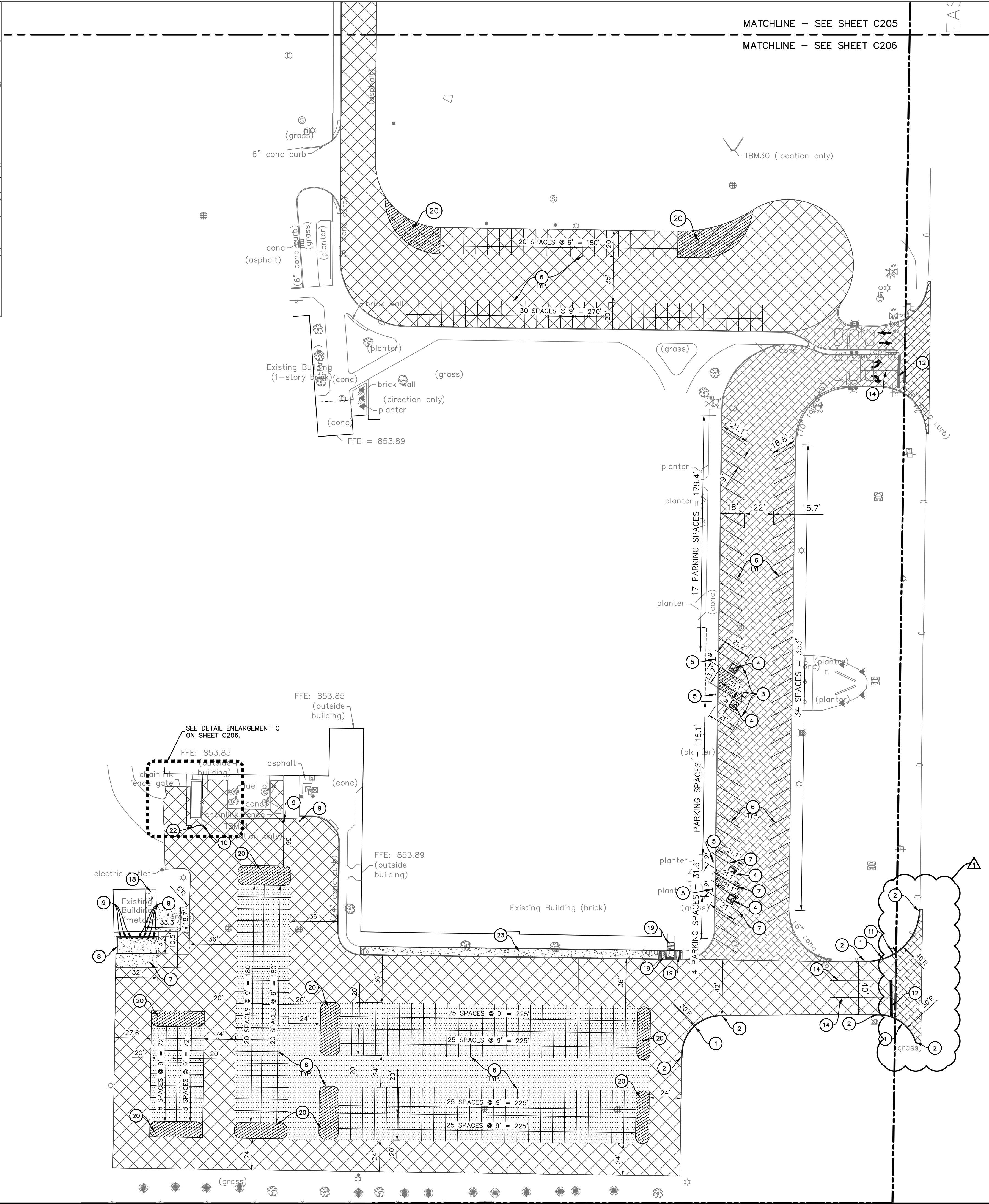
C201

PLOT DATE: 4/5/2021 7:10 AM
 PLOT SCALE: 1"=40'
 DRAWING FILE: P:\2020\03307\0_Drawing\Civil\Construction_Documents\2020.03307_CE_C201.SP.dwg
 EDITED BY: DFCOSTER
 EDIT DATE: 4/2/2021

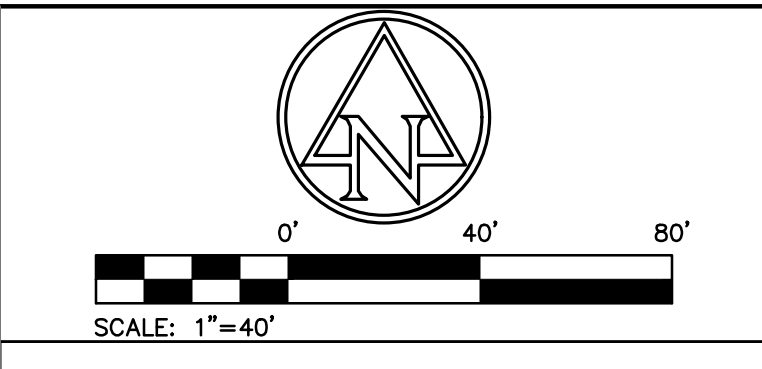
MATCHLINE - SEE SHEET C201
MATCHLINE - SEE SHEET C202



DETAIL ENLARGEMENT C
SCALE: 1" = 10'



MATCHLINE - SEE SHEET C205
MATCHLINE - SEE SHEET C206



EXISTING LEGEND

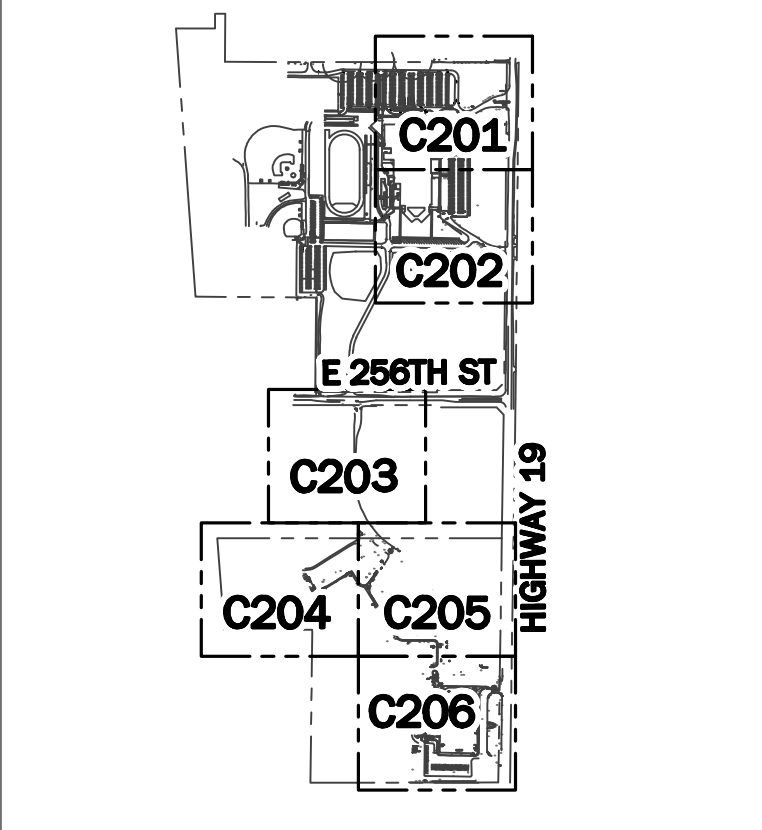
- | | |
|-----------------------|----------------------|
| ⊙ Beehive Inlet | ⊙ Lid |
| ⊙ Bush | ⊙ Light Pole |
| ⊙ Clean Out | ⊙ Manhole |
| ⊙ Combination Pole | ⊙ Pine Tree |
| ⊙ Curb Inlet | ⊙ Post |
| ⊙ Delineator Post | ⊙ Power Pole |
| ⊙ Drainage Inlet | ⊙ Sanitary MH |
| ⊙ Drainage MH | ⊙ Sign |
| ⊙ Electric Box | ⊙ Spigot |
| ⊙ Electric Handhole | ⊙ Stand Pipe |
| ⊙ Electric Meter Box | ⊙ Telephone Handhole |
| ⊙ Fire Hydrant | ⊙ Telephone Pedestal |
| ⊙ Fire Plug | ⊙ Test Hole |
| ⊙ Fire Valve Shut Off | ⊙ Transformer |
| ⊙ Flag Pole | ⊙ Tree |
| ⊙ Ground Light | ⊙ Water Valve |
| ⊙ Guard Post | |
| ⊙ Hose Btb | |

SITE LEGEND

- | | |
|-----------|-------------------------------|
| [Pattern] | LIGHT DUTY ASPHALT PAVEMENT |
| [Pattern] | HEAVY DUTY ASPHALT PAVEMENT |
| [Pattern] | RIGHT OF WAY ASPHALT PAVEMENT |
| [Pattern] | CONCRETE PAVEMENT |
| [Pattern] | MILL AND OVERLAY |

KEYNOTES

- 6" CONCRETE CURB
- CURB TAPER
- ADA PARKING SPACE (4" BLUE PAINT STRIPE)
- ADA PARKING SYMBOL
- ADA ACCESSIBLE PARKING SIGN
- PARKING SPACE (4" WHITE PAINT STRIPE)
- DUMPSTER PAD
- DUMPSTER ENCLOSURE
- CONCRETE BOLLARD
- 8' TALL BLACK VINYL COATED CHAINLINK FENCE
- CURB TURNOUT
- 24" STOP BAR, WHITE PAINT
- DIRECTIONAL ARROW (WHITE, PAINT)
- 4" WHITE SOLID LANE MARKING, PAINT
- 4" WHITE DASHED LANE MARKING, PAINT
- 4" DOUBLE YELLOW SOLID LANE MARKING, PAINT
- CONCRETE WHEEL STOP
- CONCRETE SIDEWALK
- MODIFIED ADA ACCESSIBLE RAMP TYPE 'K'
- NO PARKING STRIPING (4" WHITE)
- CONTRACTOR TO REPLACE EXISTING STONE W/ 24" TOPSOIL ACROSS ENTIRE ISLAND AREA
- SWING GATE
- COMBINED CONCRETE CURB AND WALK



KEY MAP

- SCALE: NOT TO SCALE
- GENERAL NOTES:**
- CONTRACTOR SHALL PROTECT AND NOT DESTROY THE PROPERTY CORNER MONUMENTS DURING CONSTRUCTION.
 - CONTRACTOR TO VERIFY LOCATION, SIZE AND DEPTH OF EXISTING UTILITIES PRIOR TO COMMENCING ANY CONSTRUCTION. CONTACT ENGINEER IF VARIATION EXISTS.
 - SEE SHEET C002 GENERAL NOTES FOR MORE INFORMATION.

!! CAUTION !!

THE LOCATIONS OF ALL EXISTING UNDERGROUND UTILITIES SHOWN ON THIS PLAN ARE BASED UPON ABOVE GROUND EVIDENCE (including, but not limited to, manholes, inlets, valves, and marks made upon the ground by others) AND ARE SPECULATIVE IN NATURE. THERE MAY ALSO BE OTHER EXISTING UNDERGROUND UTILITIES FOR WHICH THERE IS NO ABOVE GROUND EVIDENCE OR FOR WHICH NO ABOVE GROUND EVIDENCE WAS OBSERVED. THE EXACT LOCATIONS OF SAID EXISTING UNDERGROUND UTILITIES SHALL BE VERIFIED BY THE CONTRACTOR PRIOR TO ANY AND ALL CONSTRUCTION.

CALL TOLL FREE
811 OR 1-800-382-5544
INDIANA UNDERGROUND



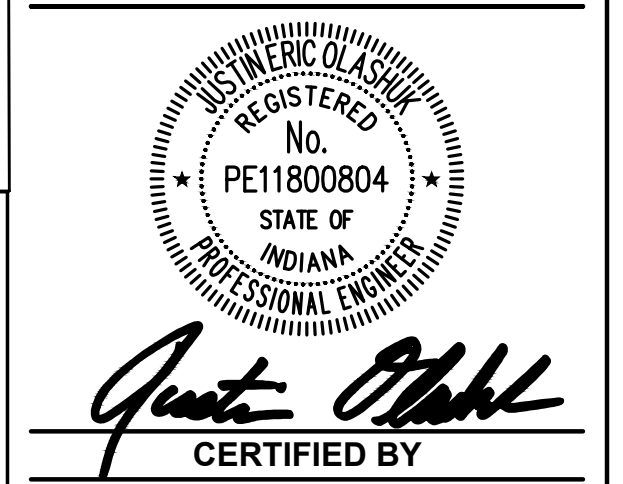
9025 River Road, Suite 200 | Indianapolis, Indiana 46240
TEL 317.547.5580 | FAX 317.543.0270
www.structurepoint.com



HAMILTON HEIGHTS SCHOOL

PAVEMENT IMPROVEMENTS

25802 STATE ROAD 19, ARCADIA, INDIANA



ISSUANCE INDEX

DATE:	3/17/2021
PROJECT PHASE:	CONSTRUCTION DOCUMENTS

REVISION SCHEDULE

NO.	DESCRIPTION	DATE
1	ADDENDUM 2	04/05/2021

Project Number 2020.03307

SITE PLAN

C206

PLOT DATE: 4/6/2021 7:10 AM
 PLOT SCALE: 1:1.5849
 EDIT DATE: 4/2/2021
 EDITED BY: DCGSTER
 DRAWING FILE: P:\2020\03307\0 - Drawings\Civil\Construction Documents\2020.03307_CE_C201.SP.dwg
 DOCUMENT NUMBER: 2020.03307

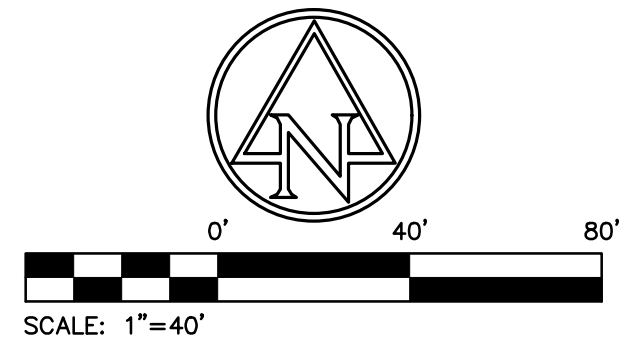
GENERAL NOTES:

- CONTRACTOR SHALL PROTECT AND NOT DESTROY THE PROPERTY CORNER MONUMENTS DURING CONSTRUCTION.
- CONTRACTOR TO VERIFY LOCATION, SIZE AND DEPTH OF EXISTING UTILITIES PRIOR TO COMMENCING ANY CONSTRUCTION. CONTACT ENGINEER IF VARIATION EXISTS.
- SEE SHEET C002 GENERAL NOTES FOR MORE INFORMATION.

!! CAUTION !!

THE LOCATIONS OF ALL EXISTING UNDERGROUND UTILITIES SHOWN ON THIS PLAN ARE BASED UPON ABOVE GROUND EVIDENCE (including, but not limited to, manholes, inlets, valves, and marks made upon the ground by others) AND ARE SPECULATIVE IN NATURE. THERE MAY ALSO BE OTHER EXISTING UNDERGROUND UTILITIES FOR WHICH THERE IS NO ABOVE GROUND EVIDENCE OR FOR WHICH NO ABOVE GROUND EVIDENCE WAS OBSERVED. THE EXACT LOCATIONS OF SAID EXISTING UNDERGROUND UTILITIES SHALL BE VERIFIED BY THE CONTRACTOR PRIOR TO ANY AND ALL CONSTRUCTION.

CALL TOLL FREE
 *811 OR 1-800-382-5544
 - INDIANA UNDERGROUND -



EXISTING LEGEND

- | | | | |
|--|---------------------|--|--------------------|
| | Beehive Inlet | | Lid |
| | Bush | | Light Pole |
| | Clean Out | | Manhole |
| | Combination Pole | | Pine Tree |
| | Curb Inlet | | Post |
| | Delineator Post | | Power Pole |
| | Drainage Inlet | | Sanitary MH |
| | Drainage MH | | Sign |
| | Electric Box | | Spigot |
| | Electric Handhole | | Stand Pipe |
| | Electric Meter Box | | Telephone Handhole |
| | Fire Hydrant | | Telephone Pedestal |
| | Fire Plug | | Test Hole |
| | Fire Valve Shut Off | | Transformer |
| | Flag Pole | | Tree |
| | Ground Light | | Water Valve |
| | Guard Post | | |
| | Hose Bib | | |

BENCHMARK DATA

OPUS SOLUTION #29933630
 ASI BASE #300 REBAR SET ELEV=858.29

ASI TBM #31
 CHISELED SQUARE ON EAST SIDE OF CONCRETE LIGHT POLE BASE AT SE CORNER OF MIDDLE SCHOOL PARKING LOT.
 ELEV = 855.26

ASI TBM #33
 CHISELED "X" ON NORTH BOLT OF FIRE HYDRANT AT NW CORNER OF HIGH SCHOOL.
 ELEV = 859.73

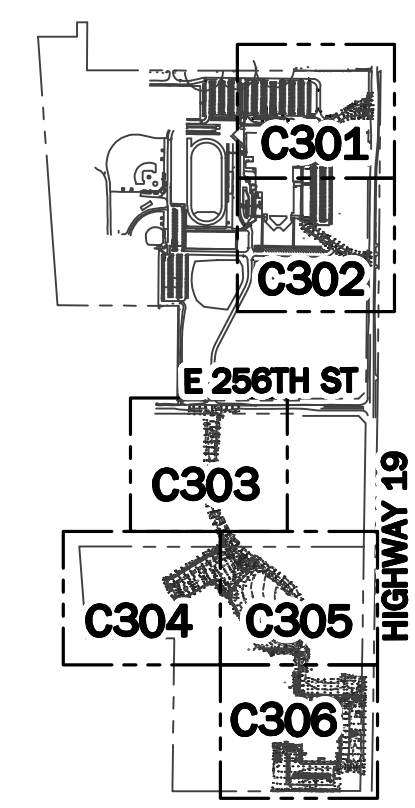
ASI TBM #35
 CHISELED "X" ON NORTH BOLT OF FIRE HYDRANT AT NORTHWEST CORNER OF FOOTBALL FIELD BLEACHERS.
 ELEV = 857.96

GRADING LEGEND

- | | |
|----|---------------------|
| ME | MATCH EXISTING |
| FL | FLOWLINE |
| BC | BOTTOM OF CURB |
| TC | TOP OF CURB |
| HP | HIGH POINT |
| LP | LOW POINT |
| | CONTOURS |
| | SWALE |
| | CURB ELEVATIONS |
| | SPOT ELEVATIONS |
| | FLOW ARROW |
| | STORM SEWER LINE |
| | PAVEMENT UNDERDRAIN |
| | STRUCTURES |
| | RIDGE LINE |
- GRADING WALL DETAIL**
 NOT TO SCALE
- TW: TOP OF WALL
 FGU: FINISH GRADE AT UPPER SIDE OF WALL
 FGL: FINISH GRADE AT LOWER SIDE OF WALL

KEYNOTES

ELECTRIC \ TELECOMMUNICATIONS
 E1. RELOCATED LIGHT POLE AND BASE. WORK TO BE PERFORMED AS PART OF ALTERNATE #1 SCOPE OF WORK.



KEY MAP
 SCALE: NOT TO SCALE



HAMILTON HEIGHTS
SCHOOL

PAVEMENT
IMPROVEMENTS

25802 STATE ROAD 19,
 ARCADIA, INDIANA



Justin Glashow
 CERTIFIED BY

ISSUANCE INDEX	
DATE:	3/17/2021
PROJECT PHASE:	CONSTRUCTION DOCUMENTS

REVISION SCHEDULE		
NO.	DESCRIPTION	DATE
1	ADDENDUM 2	04/05/2021

Project Number 2020.03307

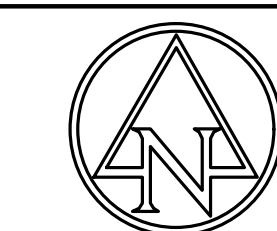
GRADING AND
UTILITY PLAN

C301

PLOT DATE: 4/5/2021 7:11 AM
 PLOT SCALE: 1:2.5849
 DRAWING FILE: P:\2020\03307\0_Drawing\Civil\Construction Documents\2020.03307_CE_C301.GPJ.PLW
 EDITED BY: DFCOSTER
 EDIT DATE: 4/22/2021

MATCHLINE - SEE SHEET C301
 MATCHLINE - SEE SHEET C302

UTILITY CONTACTS			
UTILITY	COMPANY	CONTACT	PHONE NO.
CABLE TELEVISION	COMCAST	-	317-776-0660
ELECTRIC	DUKE ENERGY	-	800-521-2232
GAS	VECTREN	BRIAN HARGER	317-592-4500
SANITARY SEWER	ARCADIA UTILITIES	JOHN PHIFER	317-984-3512
STORM SEWER	HAMILTON CO. SURVEYOR	ANDY CONOVER	317-776-8466
TELEPHONE	FRONTIER	STEVE COSTFLOW	317-984-9010
WATER	ARCADIA UTILITIES	JOHN PHIFER	317-984-3512

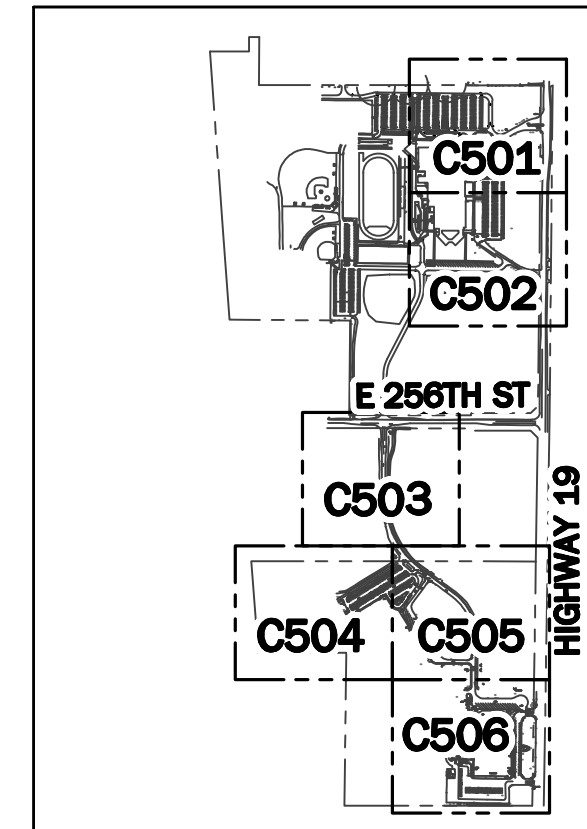


EXISTING LEGEND

- | | | | |
|--|---------------------|--|--------------------|
| | Beehive Inlet | | Lid |
| | Bush | | Light Pole |
| | Clean Out | | Manhole |
| | Combination Pole | | Pine Tree |
| | Curb Inlet | | Post |
| | Delineator Post | | Power Pole |
| | Drainage Inlet | | Sanitary MH |
| | Drainage MH | | Sign |
| | Electric Box | | Spigot |
| | Electric Handhole | | Stand Pipe |
| | Electric Meter Box | | Telephone Handhole |
| | Fire Hydrant | | Telephone Pedestal |
| | Fire Plug | | Test Hole |
| | Fire Valve Shut Off | | Transformer |
| | Flag Pole | | Tree |
| | Ground Light | | Water Valve |
| | Guard Post | | |
| | Hose Bib | | |

EROSION CONTROL LEGEND

- | | |
|--|--|
| | SILT FENCE |
| | CONSTRUCTION LIMITS |
| | INLET PROTECTION |
| | AREA SUBJECT TO TEMPORARY SEEDING DURING CONSTRUCTION AND PERMANENT SEEDING AFTER CONSTRUCTION IS COMPLETE |
| | EROSION CONTROL BLANKET WITH SEEDING |
| | GRAVEL CONSTRUCTION ENTRANCE |
| | STAGING AREA |
| | CONCRETE WASHOUT |
| | DUMPSTER / RECYCLING AREA |
| | PORT-O-LET |
| | N.O.I. SIGN POSTING |



KEY MAP

SCALE: NOT TO SCALE

GENERAL NOTES:

- CONTRACTOR SHALL PROTECT AND NOT DESTROY THE PROPERTY CORNER MONUMENTS DURING CONSTRUCTION.
- CONTRACTOR TO VERIFY LOCATION, SIZE AND DEPTH OF EXISTING UTILITIES PRIOR TO COMMENCING ANY CONSTRUCTION. CONTACT ENGINEER IF VARIATION EXISTS.
- SEE SHEET C002 GENERAL NOTES FOR MORE INFORMATION.

!! CAUTION !!

THE LOCATIONS OF ALL EXISTING UNDERGROUND UTILITIES SHOWN ON THIS PLAN ARE BASED UPON ABOVE GROUND EVIDENCE (including, but not limited to, manholes, inlets, valves, and marks made upon the ground by others) AND ARE SPECULATIVE IN NATURE. THERE MAY ALSO BE OTHER EXISTING UNDERGROUND UTILITIES FOR WHICH THERE IS NO ABOVE GROUND EVIDENCE OR FOR WHICH NO ABOVE GROUND EVIDENCE WAS OBSERVED. THE EXACT LOCATIONS OF SAID EXISTING UNDERGROUND UTILITIES SHALL BE VERIFIED BY THE CONTRACTOR PRIOR TO ANY AND ALL CONSTRUCTION.

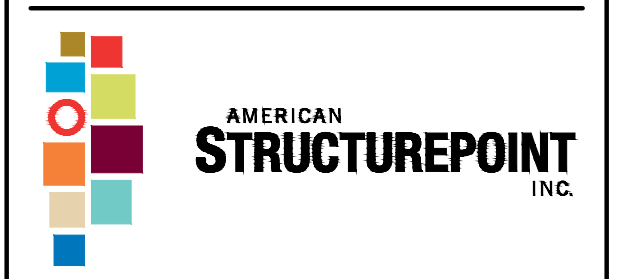
CALL TOLL FREE
 811 OR 1-800-382-5544
 - INDIANA UNDERGROUND -



HAMILTON HEIGHTS SCHOOL DISTRICT

25802 Indiana 19

Arcadia, Indiana 46030



9025 River Road, Suite 200 | Indianapolis, Indiana 46240
 TEL 317.547.5580 | FAX 317.543.0270
 www.structurepoint.com

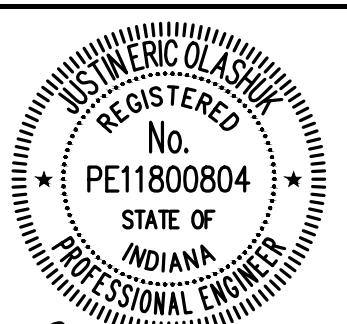


5975 Castle Creek Parkway N Drive, Suite 300 • Indianapolis, Indiana 46250
 Tel: 317.810.4141 • Fax: 317.810.4140 • www.applied-e-s.com

HAMILTON HEIGHTS SCHOOL

PAVEMENT IMPROVEMENTS

25802 STATE ROAD 19,
 ARCADIA, INDIANA



Justin M. Glashow
 CERTIFIED BY

ISSUANCE INDEX	
DATE:	3/17/2021
PROJECT PHASE:	CONSTRUCTION DOCUMENTS

REVISION SCHEDULE		
NO.	DESCRIPTION	DATE
1	ADDENDUM 2	04/05/2021

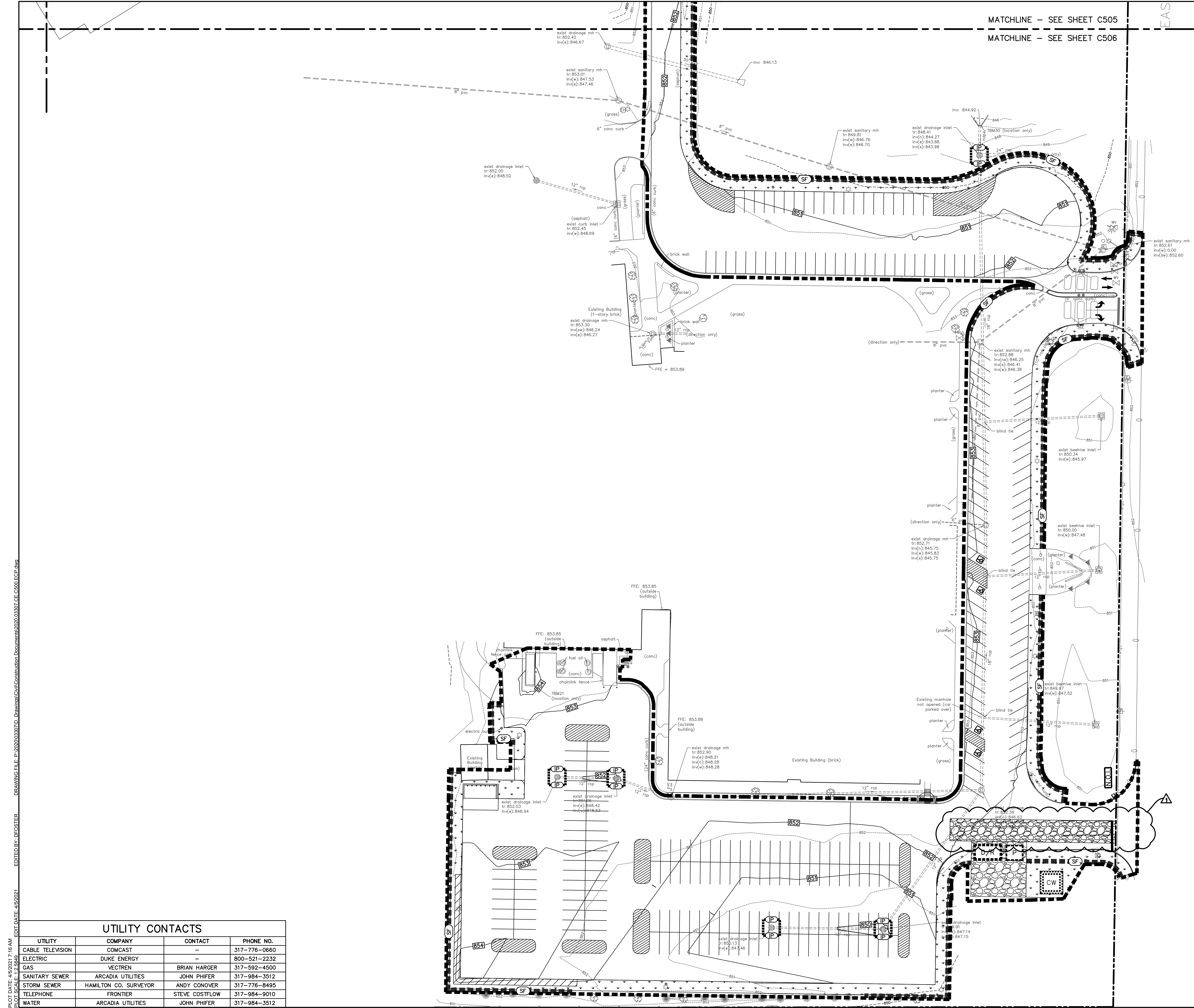
Project Number 2020.03307

EROSION CONTROL PLAN

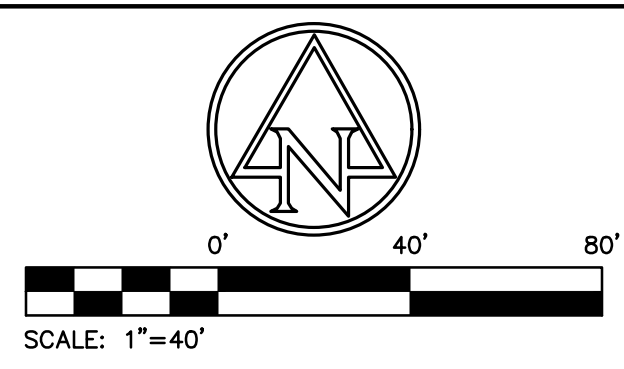
C501

PLOT DATE: 4/5/2021 7:14 AM
 PLOT SCALE: 1:2.5849
 DRAWING FILE: P:\2020\03307\0_Drawing\Civil\Construction Documents\2020.03307_CE_C500.ECP.dwg
 EDITED BY: DFCOSTER
 EDIT DATE: 4/2/2021

MATCHLINE - SEE SHEET C501
 MATCHLINE - SEE SHEET C502



MATCHLINE - SEE SHEET C505
 MATCHLINE - SEE SHEET C506

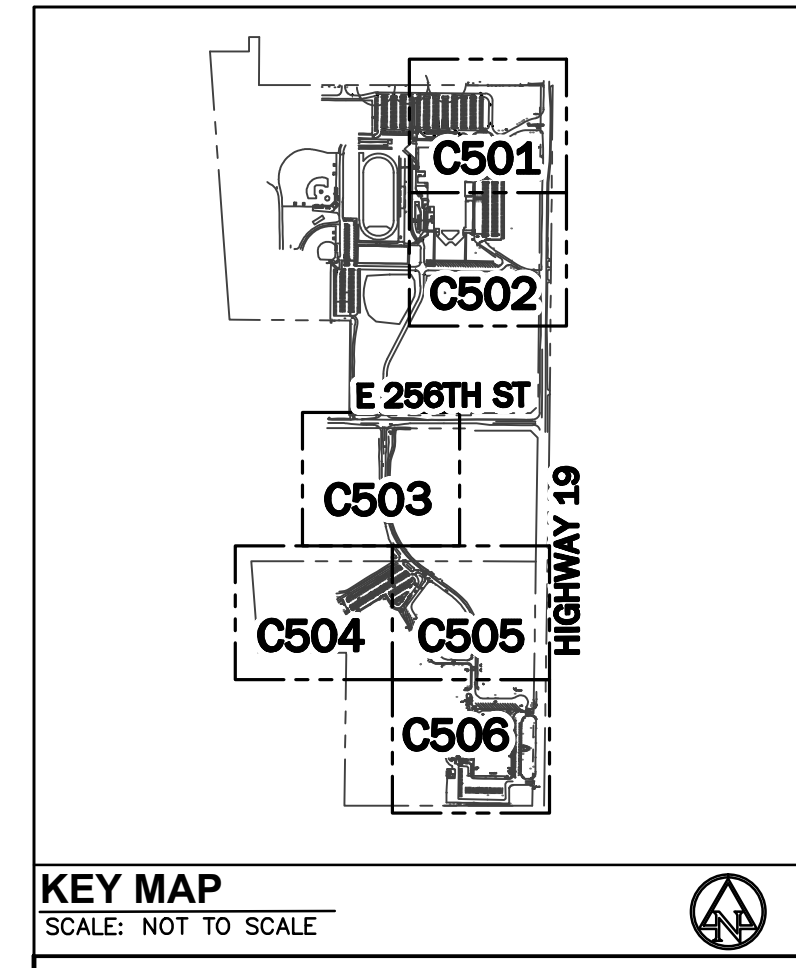


EXISTING LEGEND

	Beehive Inlet		Lid
	Bush		Light Pole
	Clean Out		Manhole
	Combination Pole		Pine Tree
	Curb Inlet		Post
	Delineator Post		Power Pole
	Drainage Inlet		Sanitary MH
	Drainage MH		Sign
	Electric Box		Spigot
	Electric Handhole		Stand Pipe
	Electric Meter Box		Telephone Handhole
	Fire Hydrant		Telephone Pedestal
	Fire Plug		Test Hole
	Fire Valve Shut Off		Transformer
	Flag Pole		Tree
	Ground Light		Water Valve
	Guard Post		
	Hose Bib		

EROSION CONTROL LEGEND

	SILT FENCE
	CONSTRUCTION LIMITS
	INLET PROTECTION
	AREA SUBJECT TO TEMPORARY SEEDING DURING CONSTRUCTION AND PERMANENT SEEDING AFTER CONSTRUCTION IS COMPLETE
	EROSION CONTROL BLANKET WITH SEEDING
	GRAVEL CONSTRUCTION ENTRANCE
	STAGING AREA
	CONCRETE WASHOUT
	DUMPSTER / RECYCLING AREA
	PORT-O-LET
	N.O.I. SIGN POSTING



- GENERAL NOTES:**
- CONTRACTOR SHALL PROTECT AND NOT DESTROY THE PROPERTY CORNER MONUMENTS DURING CONSTRUCTION.
 - CONTRACTOR TO VERIFY LOCATION, SIZE AND DEPTH OF EXISTING UTILITIES PRIOR TO COMMENCING ANY CONSTRUCTION. CONTACT ENGINEER IF VARIATION EXISTS.
 - SEE SHEET C002 GENERAL NOTES FOR MORE INFORMATION.

!! CAUTION !!
 THE LOCATIONS OF ALL EXISTING UNDERGROUND UTILITIES SHOWN ON THIS PLAN ARE BASED UPON ABOVE GROUND EVIDENCE (including, but not limited to, manholes, inlets, valves, and marks made upon the ground by others) AND ARE SPECULATIVE IN NATURE. THERE MAY ALSO BE OTHER EXISTING UNDERGROUND UTILITIES FOR WHICH THERE IS NO ABOVE GROUND EVIDENCE OR FOR WHICH NO ABOVE GROUND EVIDENCE WAS OBSERVED. THE EXACT LOCATIONS OF SAID EXISTING UNDERGROUND UTILITIES SHALL BE VERIFIED BY THE CONTRACTOR PRIOR TO ANY AND ALL CONSTRUCTION.
 CALL TOLL FREE
 811 OR 1-800-382-5544
 - INDIANA UNDERGROUND -



HAMILTON HEIGHTS SCHOOL DISTRICT
 25802 Indiana 19
 Arcadia, Indiana 46030



9025 River Road, Suite 200 | Indianapolis, Indiana 46240
 TEL 317.547.5580 | FAX 317.543.0270
 www.structurepoint.com

Applied Engineering Services
 5975 Castle Creek Parkway N Drive, Suite 300 • Indianapolis, Indiana 46250
 Tel: 317.810.4141 • Fax: 317.810.4140 • www.applied-e-s.com

HAMILTON HEIGHTS SCHOOL

PAVEMENT IMPROVEMENTS

25802 STATE ROAD 19,
 ARCADIA, INDIANA



Justin M. Glashow
 CERTIFIED BY

ISSUANCE INDEX

DATE:	3/17/2021
PROJECT PHASE:	CONSTRUCTION DOCUMENTS

REVISION SCHEDULE

NO.	DESCRIPTION	DATE
1	ADDENDUM 2	04/05/2021

Project Number 2020.03307

EROSION CONTROL PLAN

C506

PLOT DATE: 4/6/2021 7:16 AM
 PLOT SCALE: 1"=50'
 DRAWING FILE: P:\2020\03307\0 - Drawings\Civil\Construction Documents\2020.03307_CE_C500_ECP.dwg
 EDIT DATE: 4/6/2021
 EDITOR: DECESTER

UTILITY CONTACTS

UTILITY	COMPANY	CONTACT	PHONE NO.
CABLE TELEVISION	COMCAST	-	317-776-0660
ELECTRIC	DUKE ENERGY	-	800-521-2232
GAS	VECTREN	BRIAN HARGER	317-592-4500
SANITARY SEWER	ARCADIA UTILITIES	JOHN PHIFER	317-984-3512
STORM SEWER	HAMILTON CO. SURVEYOR	ANDY CONOVER	317-776-8495
TELEPHONE	FRONTIER	STEVE COSTFLOW	317-984-9010
WATER	ARCADIA UTILITIES	JOHN PHIFER	317-984-3512